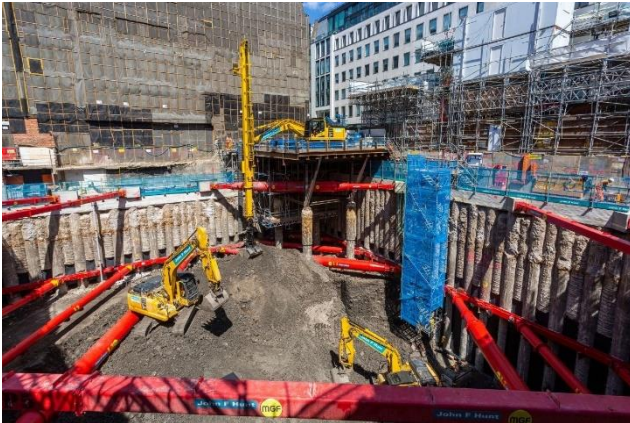


Challenges:



The largest sustainability challenges our industry is facing are the use of raw materials, as 40% of the world's raw materials are used within construction. Embedded within the raw material is embodied carbon which is the total Greenhouse Gas (GHG) emission produced to create a built asset. With

construction becoming more widespread within the built environment, limiting the CO² footprint is an essential part of John F Hunt.

Waste Management is also a critical concern for John F Hunt. They aim to address this issue by diverting 95% of waste from landfill at all their construction and demolition sites. However, industry wide construction waste accounts for more than 50% of overall landfill volumes, and it has been noted that 10% of all materials delivered to UK construction sites are wasted due to loss of the products, over-ordering, and damage.

The construction and demolition industry accounts for 10% of the carbon dioxide emissions directly. This is including but not limited to energy, fuel, and electricity. Associated with this issue is air quality pollution, from NRMM exhaust emissions which is responsible for 6-10% of toxic pollution in London. Dust is the industry's greatest concern. The most effective way to limit the impact of dust on construction and demolition sites is to use water to dampen materials on site. As a result, construction and demolition sites use large amounts of water.

Impact:

- **Growth support:** Using the School's resources have allowed John F Hunt to grow, from attending the networks set up by the School to E-learning which helps the business gain greater knowledge of sustainable development. The E-learning modules have allowed John F Hunt as a business to identify key challenges in their area and providing them with the necessary tool to overcome them.
- **Sustainable procurement:** Since joining the School, John F Hunt has looked differently at procurement. Their supply chains have also gained a better understanding on what is required of them, and what standards John F Hunt set to ensure that their clients have achieved their desired BREEAM ratings.
- **Carbon:** The School has a wealth of resources on carbon management schemes which are used throughout the company. This has helped them understand and set targets in line with Construction 2025 targets, e.g. reducing our GHG emissions by 50%.

Fact box

John F Hunt Ltd

Company

John F Hunt Ltd

No of employees

>250 employees

HQ

Essex

Website

<https://www.johnfhunt.co.uk/>

Main contact

info@johnfhunt.co.uk

Services

Construction & Demolition

About

John F Hunt Ltd (JFH) is a group of construction-related companies providing specialist industry-linked services. JFH is a multi-disciplined contractor, specialising in demolition and construction (Temporary Work, Civil Engineering) within London.



Value gained:

Increased sustainability compliancy – With the help of the School, John F Hunt has managed to increase site sustainability and allow for increase compliancy to client standards such as BREEAM. As such, this has allowed the company to achieve cost savings on all of their sites through a reduction in carbons emission, waste, and better waste management.

Client satisfaction – Knowing that they are part of the School has always helped John F Hunt provide opportunities to improve their relationships and reputation with clients. Engaging in the School's platform with other members who share mutual goals has also allowed the business to network more effectivity and has allowed them to standout within the marketplace.

Limiting environmental effect and risk – The use of the School's different resources and e-learning modules (throughout the business from management to onsite staff) has allowed John F Hunt to limit the environmental risks relating to construction and demolition.