

RDP National Supply Chain Event

11th August 2021

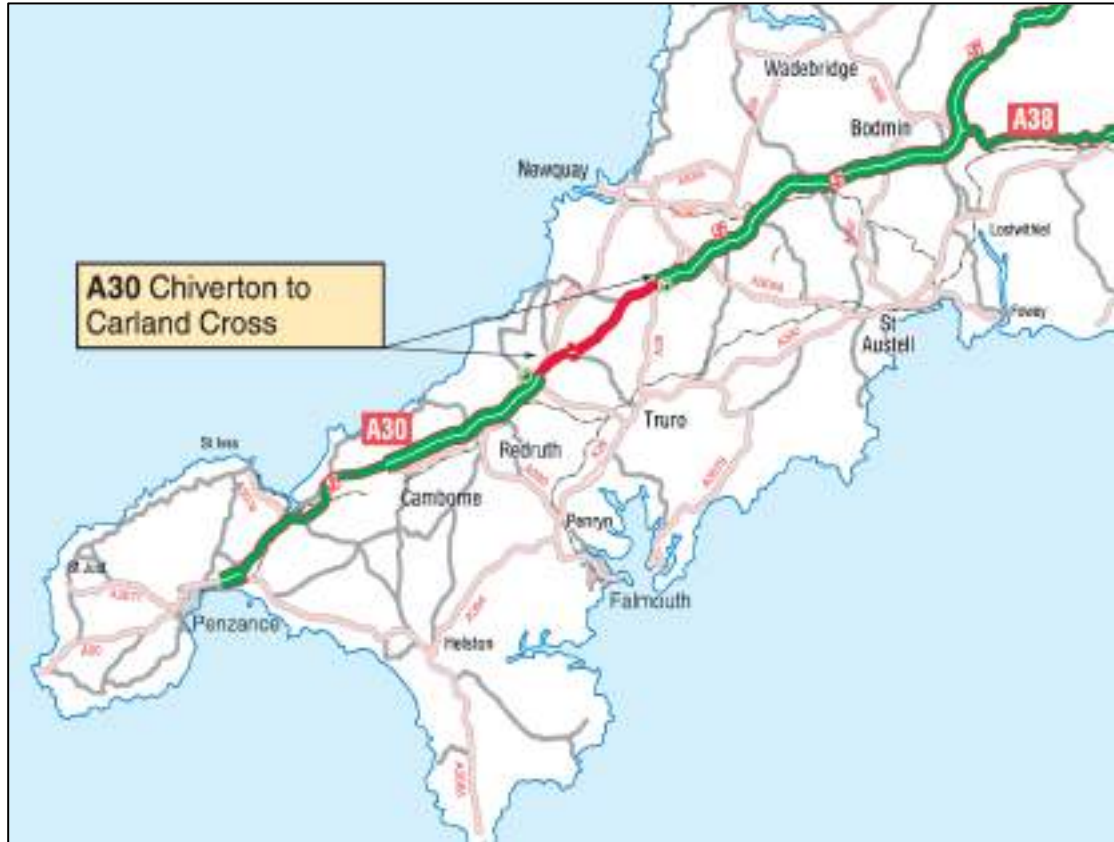


- John Lee – Project Director



A30 Chiverton to Carland Cross

Scheme Overview



The Scheme is upgrading the A30 north of Truro, connecting the dual carriageway section around Bodmin with the dual carriageway Redruth bypass. The outline design identifies improvement works including providing;

- An 8.7mile, high quality 70mph dual carriageway, connecting to the existing A30 dual carriageway at either end.
- Replacement of Chiverton Cross roundabout with a new grade separated gyratory junction.
- A new, grade separated, limited movements junction at Chybucca, with west-facing slip roads connecting to the new dual carriageway.
- Replacement of the existing roundabout at Carland Cross with a new grade separated junction.
- New bridges and accesses across the new road and the old road.
- Retention of the existing A30 including the construction of further local roads to maintain connectivity.

Project budget = £330m

Design & Build = c.£220m

Scheme Overview

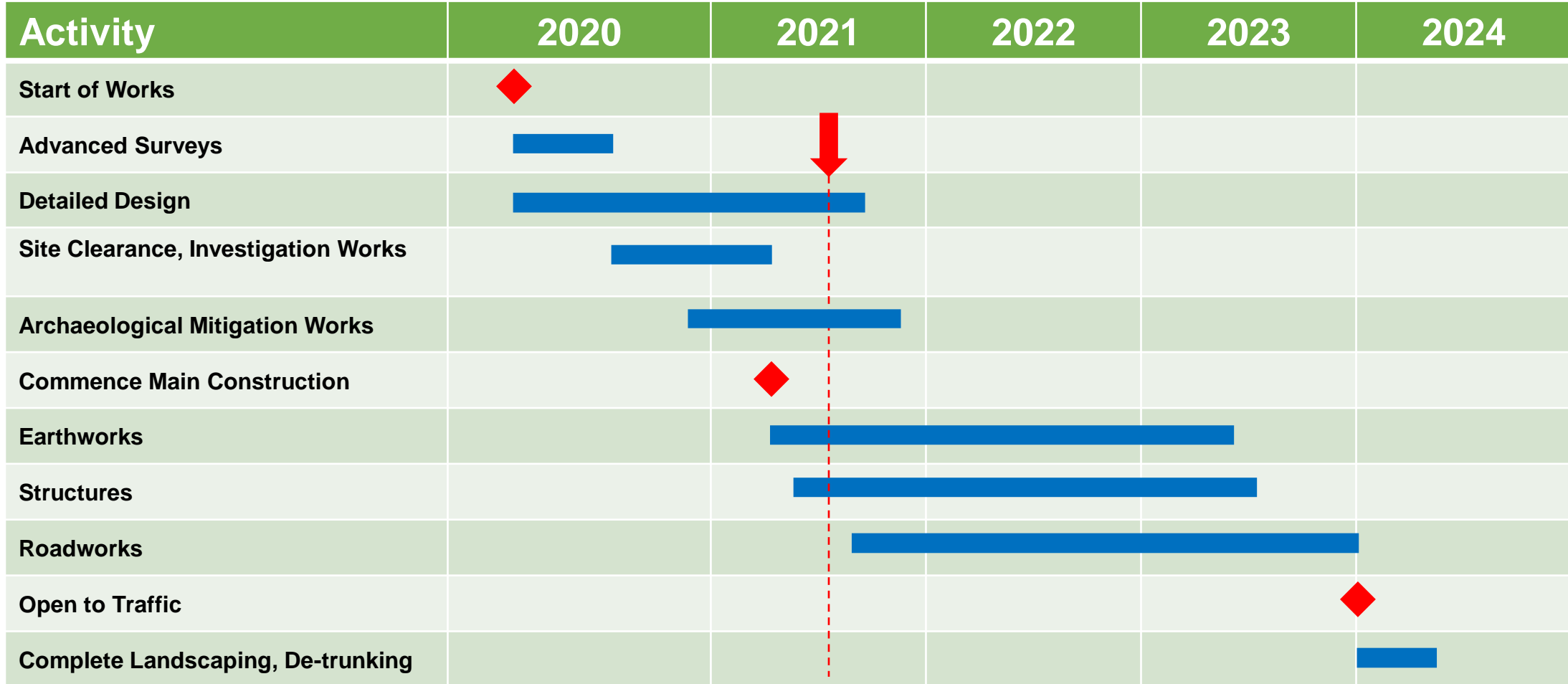


- 3 new Underpasses
- 7 new Underbridges
- 3 new Overbridges
- Refurbishment of 1 existing Underbridge
- 2 million m³ of earthworks
- 20 new culverts and wildlife crossings
- 46,000m of drainage
- 20,000m wildlife proof fencing
- 650m of acoustic fencing
- 1 new bat roost to replace an existing stone barn
- A new badger setts
- 12,500m of Cornish Hedge

Objectives

- Relieving traffic congestion on a vital link to south west England.
- Improve user satisfaction by reliable journey times.
- Improving safety and reducing driver stress by providing a more free-flowing network.
- Providing safer local access facilities for pedestrians, cyclists and other non-motorised users.
- Encourage economic growth by providing additional junction capacity and making journey times more reliable, enabling proposed economic growth and development to come forward at key regional locations.
- Improving the environment by reducing queuing traffic resulting in a reduction to air pollution.

Outline Programme



2021 / 2022 Key procurement activities

- **Main Compound Set Up**
 - Cleaners
- **Ecological Mitigation**
 - Bat roost construction
 - Badger sett construction
- **Site access works**
 - Phase 2 site clearance works
 - Permanent fencing
- **Permanent Works**
 - Service diversions
 - Drainage works
 - Temporary CCTV
 - Communication duct installation
 - Highway Signage
 - Cornish Hedgerow
 - Road Restraint System
 - Mine Capping
 - Sub Base placement
 - Kerbing
 - Landscaping



What's already been procured

- Labour
- Earthworks
- Main structures
- Site Surveying & Setting out
- Pavement Construction
- Traffic Management
- Vehicle Recovery
- Site Security
- Temporary Fencing
- Site Clearance Phase 1
- Environmental Surveys / Site Support



What have we done to date?

- 20% of awarded contracts have gone to businesses headquartered in Cornwall
- Local SME engagement
 - Supplier-pool market research exercises
 - Compliance pre-qualification support
 - Material and labour suppliers sourced from local area
 - Use of regional CECA agents to add knowledge on local Supply Chain

Key principles

- –Open and Honest bidding process
- –Fair evaluation on a diverse mix of tender requirements

How to get involved

- Majority of tendering opportunities remain
- How to get involved A30suppliereng@costain.com