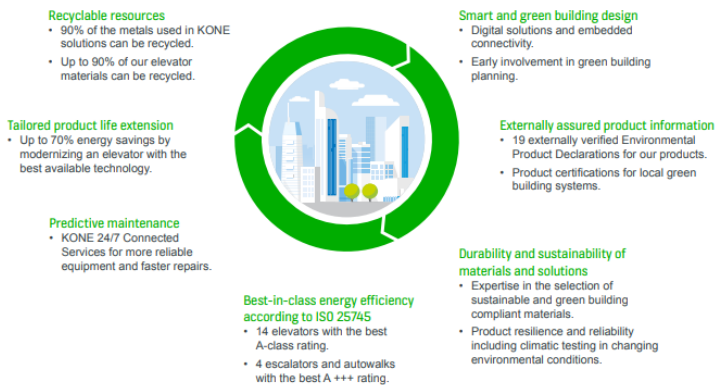


Challenges:

KONE as trusted partner throughout the building life cycle



The challenges that KONE faces focus on metrics and measurements to be able to fully ascertain progress.

KONE's sustainability

focus is on local operational delivery while their global business is leading the way in sustainable manufacturing and engineering the most sustainable and energy efficient products. The company still encounter challenges when communicating these achievements to the marketplace and customers.

Impact:

- **Stakeholder engagement:** Workshops have given an opportunity to engage with multiple stakeholders to gain insight and perspective from client, contractors, and fellow members of the supply chain. Sessions have helped advance knowledge in many different topics.
- **Improved social value:** Recently, KONE have learnt more about: Social Value and the importance of apprentice schemes and community work as well as inspiring a need for more tangible actions to demonstrate their commitment to this important issue for the present and future.
- **Developing knowledge:** Modules have been great for developing knowledge on current and new topics. The format is easy to navigate and complete. More employees are joining the Supply Chain Sustainability School and participating in modules that they are interested in. Interests have been around: Suitability in the office, Waste management and Fairness, Inclusion and Respect.

Value gained:

- **Learning and development:** The school membership has been communicated to all employees within the UK and published on KONE's intranet site. The Supply Chain Sustainability School has been most popular among KONE's new equipment business line, but it is also used by many other employees working in legal, HR, marketing and other functions. Learning and development is a key part of people strategy to KONE and this has been strengthened by the information available from the School.

Fact box



Company

KONE PLC

No of employees

1800

HQ

Chertsey, Surrey

Website

www.kone.co.uk

Main contact

Jiten Vaghela

jiten.vaghela@kone.com

Services

Lifts, escalators and automatic building doors

About

The mission at KONE is to improve the flow of urban life. As a global leader in the lift and escalator industry, KONE provides lifts, escalators and automatic building doors, as well as solutions for maintenance and modernisation to add value to buildings throughout their life cycle.

- **Better able to meet sustainability goals:** KONE's commitment to sustainability is already at a high level and is only set to grow over the coming months and years. It is vital to utilise resources such as those provided by the School to enhance the understanding of current trends, future needs, best case methodologies and other such aspects. As such, membership of the School enhances KONE's ability to meet their sustainability goals and to influence key partners and stakeholders to improve their own sustainability metrics.
- **Improved efficiency:** A successful sustainability drive will mean improved efficiency throughout the organisation, a better place to work for all, which will firstly and most importantly be of significant benefit to employees but will also in turn help create a positive differentiator within the marketplace.



CDP 2020 'A' score for corporate sustainability leadership

EcoVadis platinum medal for sustainability performance



14 elevator models with A class ISO 25745 highest energy efficiency ratings

4 escalators and autowalks with the best A+++ rating



Set science-based targets for significant reductions in greenhouse gas (GHG) emissions by 2030

Pledged to have carbon neutral operations by 2030

Future Proofing:

KONE would like to continue to see the latest and up to date resources and information on building sustainability and play a part in driving change for all. The quality of the information and training sessions are of high quality and have led to further debate and communication internally within KONE. KONE sees co-operation with the Supply Chain Sustainability School as invaluable in helping to drive change through the organisation and the wider industry and look forward to seeing this impact grow larger.

