

# M42 Junction 6 Improvement Scheme

## Meet the Buyers Event

### *Scheme Presentation*

11<sup>th</sup> August 2021

# Presenter Introduction



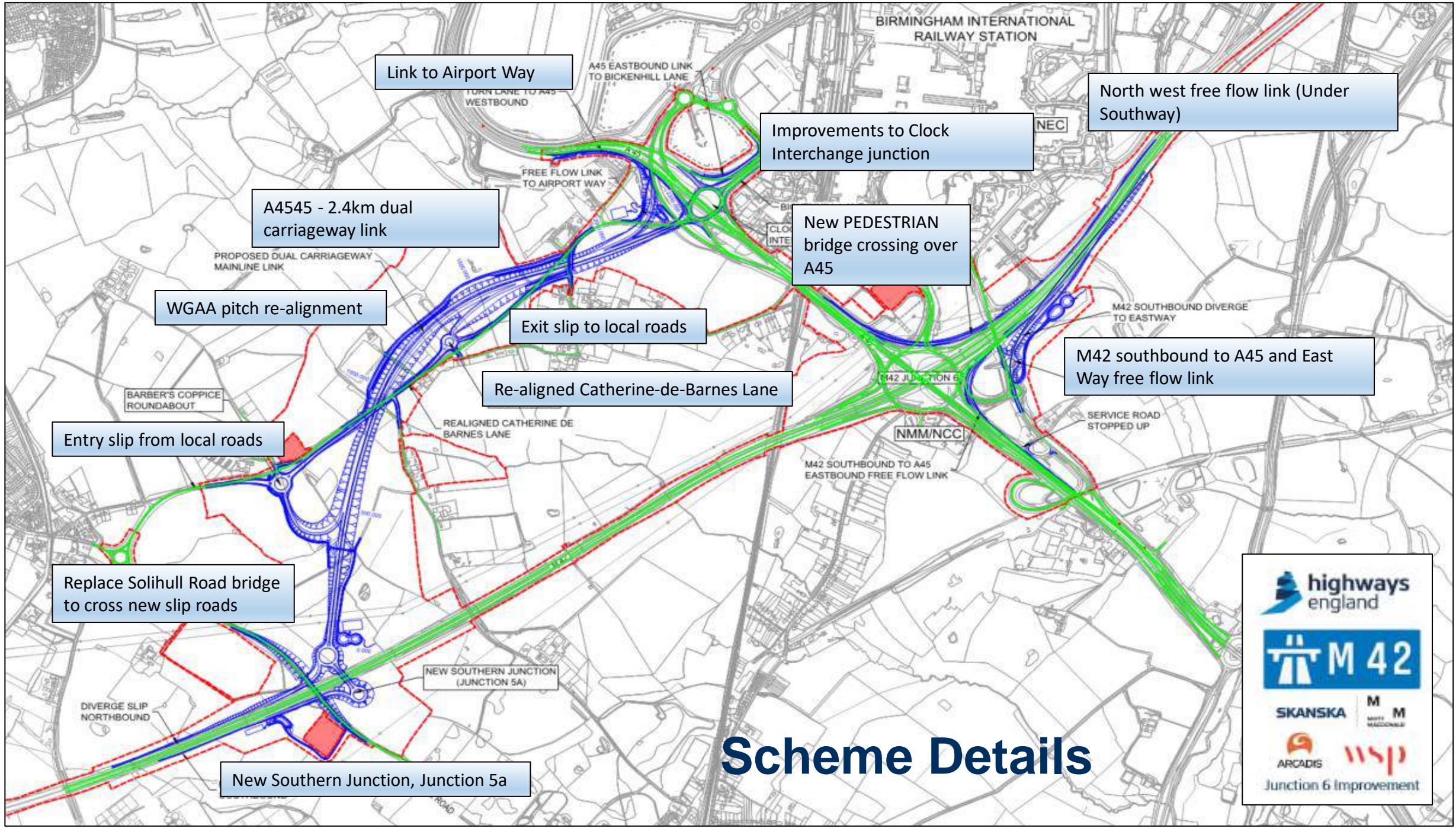
Jonathan Compton – Head of Stakeholder Engagement



Rowena Lister – Assistant Procurement Manager

# Background to the scheme

- The **M42** is an important strategic route in the **West Midlands**, with the **M5** and **M6** it links to form the **Birmingham Motorway Box**. The **M42** forms the southern and eastern arms of the **Birmingham Box**. On the eastern arm around junction 6, the **M42** carries around **130,000 vehicles a day** and is running close to capacity. Junction 6 is located on the eastern edge of **Birmingham**, approximately 9 miles from the city centre.
- M42 junction 6 provides connections between the national motorway network and the **A45** (Coventry Road). The **A45** is a major arterial route which provides strategic access west to **Birmingham** and east to **Coventry** and carries around **50,000 vehicles a day**.
- The junction has almost reached capacity, causing severe congestion and delays across the network.
- Currently, congestion and journey reliability issues are a significant constraint to future investment and economic growth in the region. Junction 6 does not have enough capacity to accommodate predicted traffic growth **beyond 2019** – even without the inclusion of **HS2**
- Junction 6 on the M42 is the gateway to an expanding **Birmingham Airport**, the **NEC**, **Birmingham Business Park** and the planned addition of **HS2's Interchange Station**.
- The M42 junction 6 improvement scheme is part of a larger government growth strategy which has been developed with local partners to maximise the economic benefits of **HS2**.
- **The aim of the scheme is to reduce congestion at junction 6 and improve customer satisfaction.**



Link to Airport Way

Improvements to Clock Interchange junction

North west free flow link (Under Southway)

A4545 - 2.4km dual carriageway link

New PEDESTRIAN bridge crossing over A45

WGAA pitch re-alignment

Exit slip to local roads

M42 southbound to A45 and East Way free flow link

Re-aligned Catherine-de-Barnes Lane

Entry slip from local roads

Replace Solihull Road bridge to cross new slip roads

New Southern Junction, Junction 5a

# Scheme Details

highways england

M42

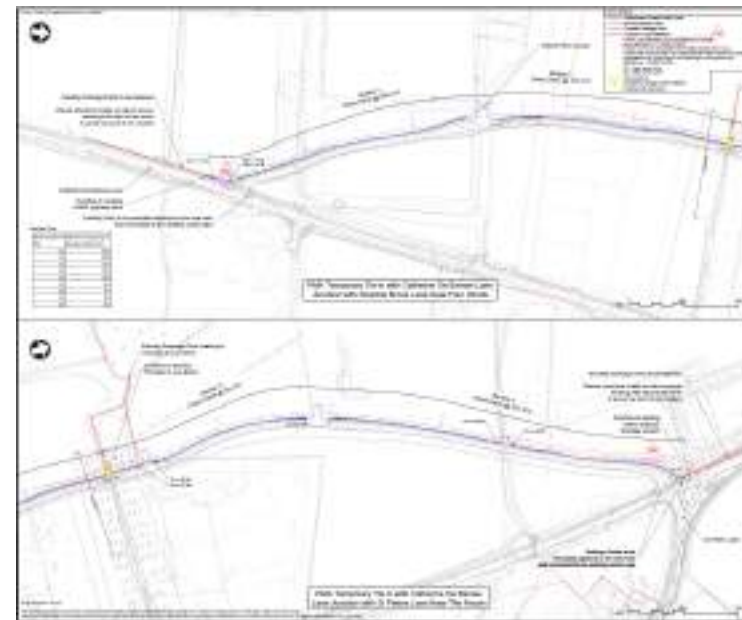
SKANSKA M M

ARCADIS WSP

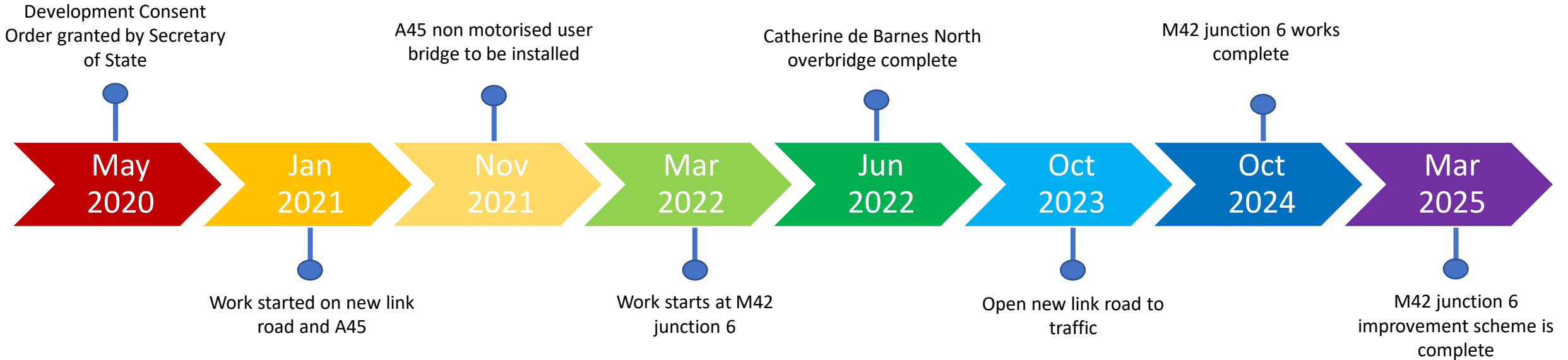
Junction 6 Improvement

# WGAA Legacy Scheme

- The new link road dissects the **Warwickshire Gaelic Athletic Association's (WGAA)** existing pitches and the **SoS** suggested that an 'enhanced level of mitigation' should be considered. As a result, a **Legacy Scheme** was devised to provide the **WGAA**, and the local community, with a new facility that would improve the local area.
- The **Development Consent Order (DCO)** scheme link road and the **Private Means of Access (PMA)** runs through one of the existing WGAA pitches and removes their main access onto **Catherine De Barnes Lane**
- The land required for the link road was acquired under the terms of the **DCO** however to ensure a fair level of mitigation was delivered a legacy scheme, making use of Highways England's designated funding was developed.
  - The scheme includes the construction of **2 new pitches** 1no. **3G** artificial year-round pitch and 1no new traditional grass playing surface
  - A new purpose-built **club house** and **car park**
  - **Landscaping** and **land drainage** adaptations to minimise biodiversity loss & landscape changes
- Scheme Value: **£5,700,000**
- The scheme is subject to a separate planning application and will be determined by SMBC in **July 2021**.
- A **community use agreement** has been developed a condition of the funding. The **WGAA** have to make the facility available to the local community under the terms of the agreement.



# Scheme Timeline



- The scheme timeline has been maintained despite Covid 19 impacts.
- Opportunities to reduce the scheme timeline continue to be explored.
- The new link road is scheduled to open to traffic October 2023 with the new free flow links at M42 junction 6 set to open October 2024.

# 2021/2022 Key Procurement Activities

Gantries

Bridge Demolition

Kerbs

Gantry Piling

Bridge Parapets

Lighting and Signs

Technology

Steel Barriers

# What has already been procured

- Labour
- Earthworks
- Pavement
- Drainage
- Small Civils
- Surveys
- Compound Set Up
- Archaeological Trial Trenching
- Traffic Management
- Bored Piling
- Sheet Piling
- Ground Investigation
- Vegetation Clearance
- Fencing



# How to get involved

- Please send all enquiries to the email address below:
- [m42.subcontract@skanska.co.uk](mailto:m42.subcontract@skanska.co.uk)

