

Infrastructure Leadership Group

16th November 2021

Welcome & Introductions:

The group was informed of the new Partners that have joined the school:



Supply Chain Development:

Simon Diggle and Stefan Jastak from National Highways was introduced to the group and provided an overview of their organisation as well as their high level priorities. National Highways is a government publicly funded company which was established in 2015. Between 2020-2025 National Highways will invest £27.4 Billion into their network.

Strategic Partnership with the School:

National Highways use the school to support several of its investment programmes:

- Lower Thames Crossing
- Smart Motorways Programme
- Regional Delivery Programme
- Scheme Delivery Programme
- A303 Stonehenge Tunnel

National Highways have used their partner contribution to the school to setup two [Learning Pathways](#) for the Highways Sector which can provide core knowledge across all programs. Core subjects include:

1. Modern Day Slavery
2. Ethics
3. Equality, Diversity, Inclusion (or "FIR")
4. Social Value
5. Carbon
6. Sustainable Procurement
7. Counter Fraud (In development)
8. Waste

Suppliers and delivery partners then use the Learning Pathways for free, to provide strategic alignment and create recommended online education for teams involved in different programs of work.

Additional, subject specific learning pathways can also be created to deepen understanding on particular issues. One recent example published in February 2020 is:

- FIR (Fairness Inclusion and Respect)

A Meet the Buyer event was also delivered in conjunction with the school on the 11th of August 2021 for the Regional Delivery Partnership which had a total of 322 attendees. With 99% of attendees rating the event excellent/good.

Engagement with National Highways supply chain is also conducted through a supplier development tool. This tool is hosted on the school's website and contains introductory videos as well as a self-assessment tool to help suppliers understand National Highways strategic priorities. Becky Bryant Partner Manager at the school provided the group with a tutorial on how to use the tool.

National Highways also explained to the group how they use the Sustainability Tool for reporting purposes. The Tool collects key metrics from the NH Supply Chain and can measure a variety of sustainability topics such as Modern Slavery & Carbon.

Combining Supplier Development and Performance Measurement

Michael Sedgwick, Supply Chain Manager at EKFB was introduced to the group and provided an insight to how EKFB have been engaging with their supply chain. EKFB is a joint venture made up of Eiffage, Kier Ferrovial and Bam. The organisation has Approximately £2bn of spend over 5 years.

EKFB started engaging with Action Sustainability (Delivery Partner of the school) in 2019 and defined scope and reporting requirements. EKFB carried out a formal tender before awarding it to Action Sustainability and began using the [Sustainability Tool](#).

EKFB had the following reporting requirements which the Sustainability Tool has assisted with:

- HS2 contract reporting requirements significant across environment, sustainability and social data
- EKFB challenges due to volume of work, supply chain and geography

Michael explained to the group that EKFB are engaging with their supply chain using in the Sustainability Tool in the following ways:

Integrating the sustainability tool into our systems and processes

- Tender stage – set expectations at tender, included in balanced scorecard and collate supplier commitments
- Contract award – specific clause in contracts detailing requirement to reporting via EKFB sustainability tool
- KPI schedule – Large contracts, strategic partners have KPI schedules in contracts
- Onboarding – specific section in our onboarding portal Tradex detailing sustainability tool
- Performance management – section of our SPM specific to sustainability tool performance

Supplier engagement, recognition and upskilling

- Ongoing supplier reporting workshops
- Steering group includes strategic suppliers
- Specific learning pathways based on data reported
- Lessons learnt

Imogen Player, Consultant at Action Sustainability provided the group with a demo of the Sustainability Tool.

Actions:

- Partners to contact Charles Naud – Charles@actionsustainability.com for further information on the Sustainability Tool.
- Partners to contact Charles or Imogen for a free demo of the tool.

Business Planning:

Every November business planning for each sector takes place.

The objectives of business planning are:

- To clarify the wider School business planning process
- To capture what Partner businesses would like from the school in 2022-23, through open discussion and sharing of ideas
- To understand our learning priorities for 2022-2023

It was explained to the group that a separate meeting will be taking place in December to conduct detailed business planning for Infrastructure.

Action: Partners to contact Rosie if they would like to be involved in the business planning session.

General School Update:

Activity and engagement in the school is continuing to increase. The school had a target for 8,000 e-learning views this year this target has been exceeded with their currently being 14,381 e-learning views. The school has also updated six of its core e-learning modules:

- Introduction to Environmental Management
- Getting value out of your EMS
- Community Engagement
- Sustainability and Groundworks
- Introduction to Materials
- Heatmapping: How to prioritise your impacts

An update was also provided on the work each group has completing within the school as well as an update on IT development. Please refer to the pre-read for further information.

Sustainable Rail:

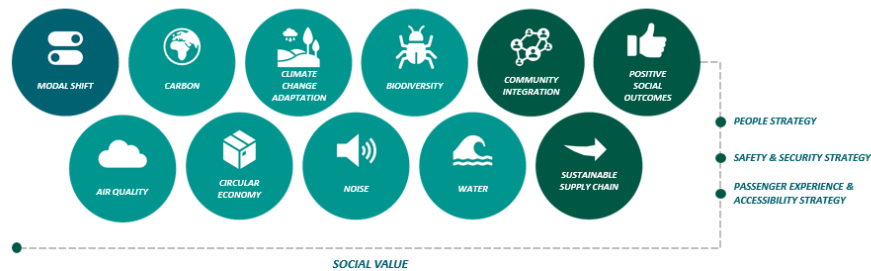
George Davies Director Sustainable Development at RSSB was invited to the meeting as a guest speaker. George explained to the group that RSSB have delivered a programme of sustainable development activity in support of the rail industry. This has been primarily focussed on decarbonisation, air quality and more recently social value.

The RSSB Sustainable Development team are delivering in three main areas:

- Define Sustainable Rail Strategy
- Provide Technical Leadership
- Engage & Communicate

Sustainability Rail Strategy

The Sustainability Rail Strategy is an industry-first strategy for sustainability leadership across rail which has been co-created by industry sustainability experts. The strategy address 11 sustainability topics and outlines a strategic framework for sustainability in rail:



For further information please refer to the pre-read.

AOB:

- The next meeting is taking place on the 18th of January 2022 – 10:00am – 13:00pm
- If you have not completed our Impact Survey, please [click here](#) to complete the survey & please share it with your colleagues and supply chain
- If you have not used your 5 training sessions as part of your annual Partnership fee, please contact Rosie to book a session in. Please note that training sessions cannot be carried over so any sessions not used before March 2022 will be lost.