

RDP National Meet the Buyers

A303 Sparkford to Ilchester Dualling Scheme

Galliford Try

18 August 2022



Introduction



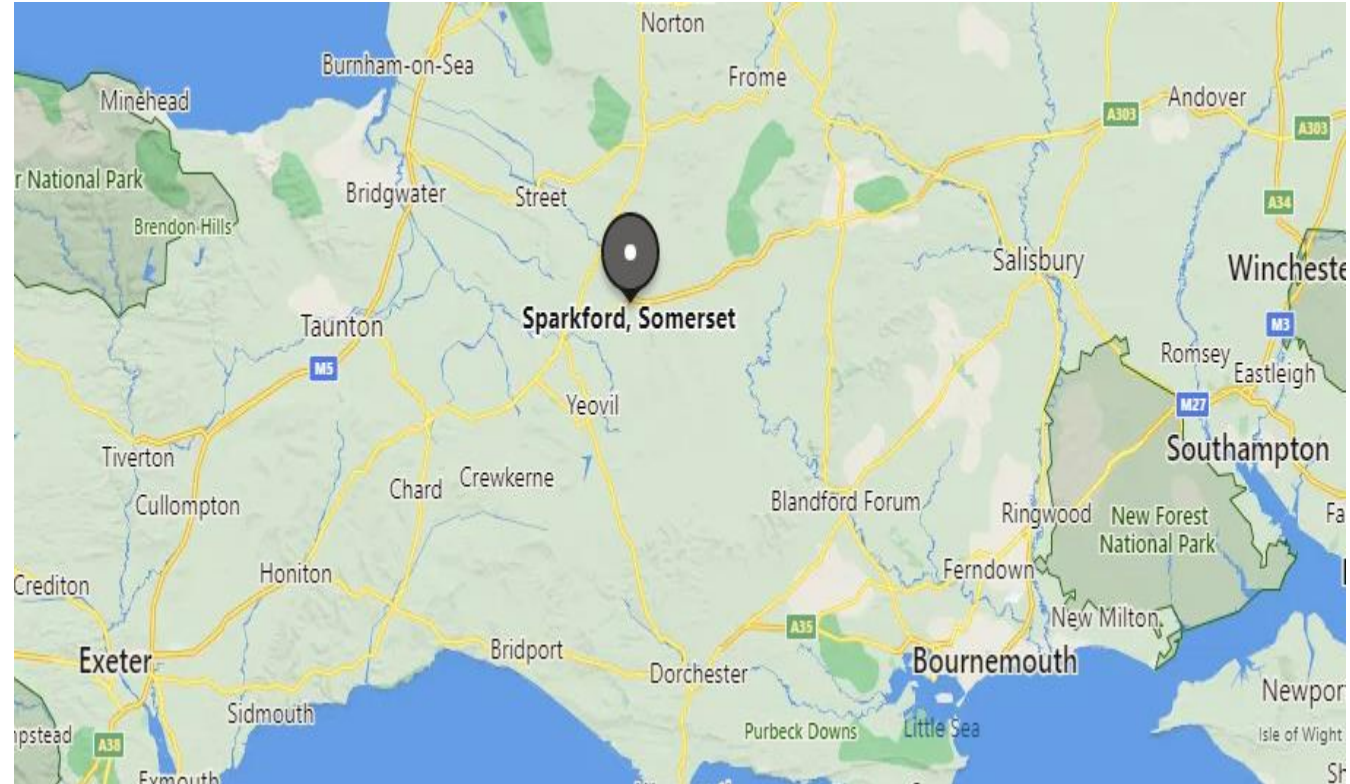
- Adrian Paddock
- Managing QS for Galliford Try
- Joined to specifically to work on the A303 scheme
- Responsible for the management of all subcontract procurement on the scheme



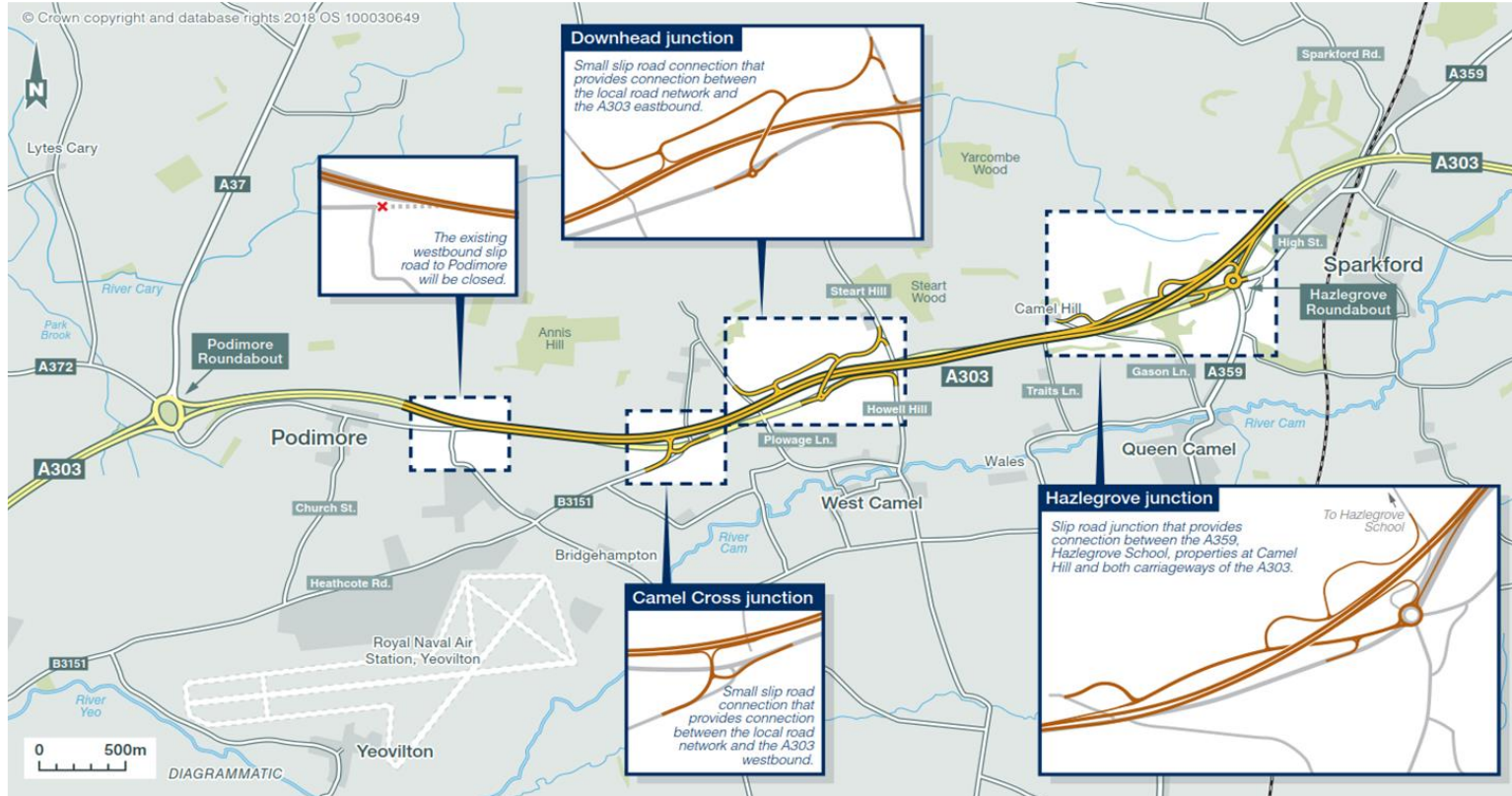
A303 Sparkford to Ilchester Dualling scheme

Purpose of the Scheme

- The A303 corridor is a vital connection between the South West and London and the South East.
- With 35 miles of single carriageway, congestion quickly becomes an issue for customers, causing delays and an increased risk of accidents.
- 5.6km of new dual carriageway between Sparkford and Ilchester, with the aim of reducing congestion, improving journey times and making the network safer for our customers.
- Delivered as part of RDP framework.
- The proposed works route carries 23,500 vehicles daily.
- We look forward to the positive outcomes this scheme will deliver for our customers



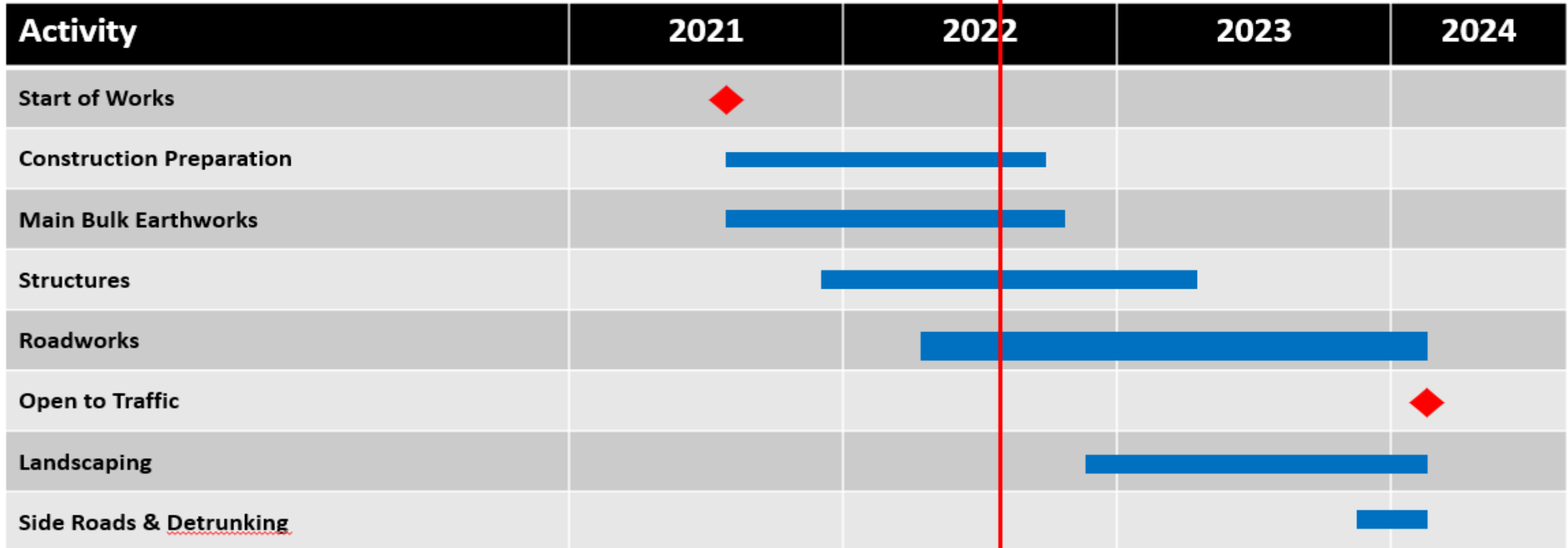
Scheme Overview



- DCO Approved in January 2021
- On-site construction commenced in August 2021
- Construction of 5.6km new dual carriageway [mix of green field and widening of existing]
- 2 new structures
- 3 new junctions
- 5no Attenuation Ponds
- Earthworks Cut / Fill 900,000m³ incl cuttings up to 10m depth / embankments up to 12m in height

A303 Programme

August 2022



Procurement [how to get involved]

- Tender opportunities advertised through the '**Contracts Finder**' online portal
- Suppliers are selected based on their **proven ability to deliver** in line with Galliford Try and National Highway's policies.
- **NEC4 Sub-Contracts** (Opt. A/B/C) incorporating standardized 'Z' clauses to suit the Delivery Integration Partner (DIP) contracting environment.
- Suppliers encouraged to sign up to be paid via the **Project Bank Account**.
- Selected tenderers must have a Galliford Try approved status on 'Builder's Profile'.
- Companies with an existing Builder's Profile [BP] account - **please check your status** and ensure that all your information is up to date.
- Invitations to submit a new BP profile with Galliford Try, or any other BP queries can be directed to the project commercial team at adrian.paddock@gallifordtry.co.uk.

Investment & Development

- **Training opportunities** will be provided to the supply chain through the ‘Supply Chain School’, to ensure we work to common standards and procedures.
- A longer-term approach to forming a **supply chain forum** will also be established – not just for A303 but also for future projects in the region.
- Invest in the supply chain where there is innovative practice.
- Opportunities for SME packages – where appropriate where packages can be split into smaller elements without impacting on the project objectives (including safety and programme) this will be reviewed.
- A focused strategy on local suppliers
- The vision in the RDP is that value is driven through equality, diversity & inclusion and collaborative working

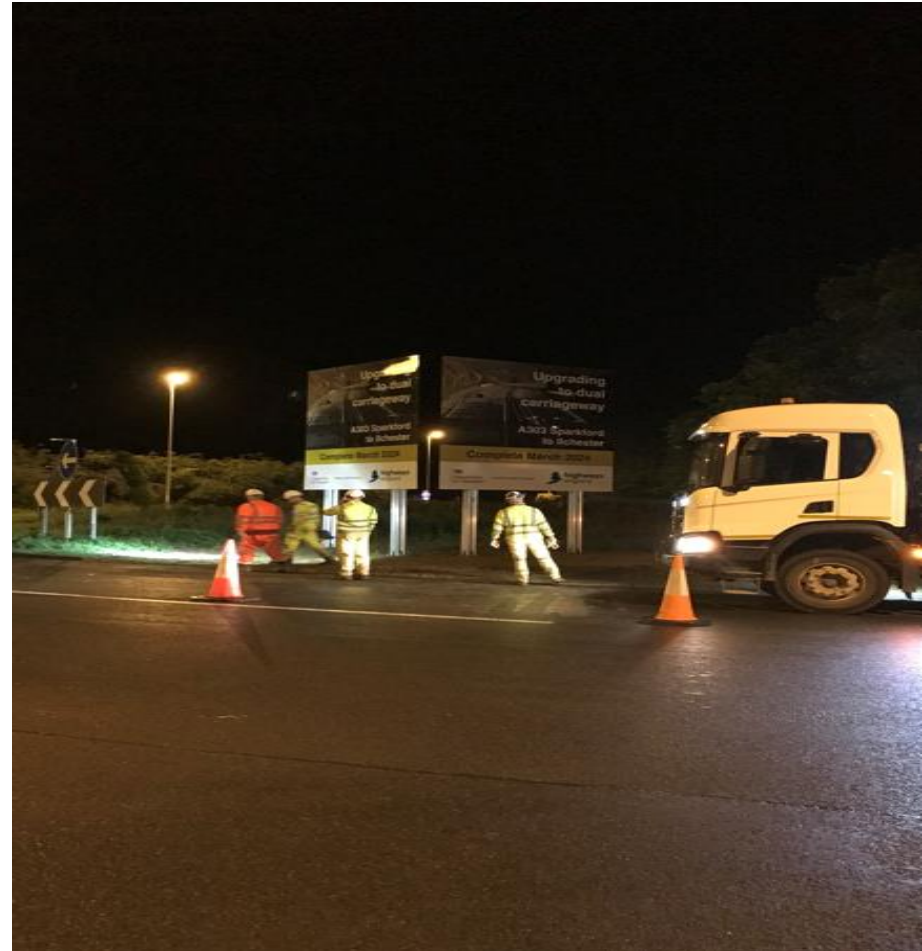
Procurement to Date

Ecology
Fencing
Site Clearance
Compound Set Up & Surfacing
Earthworks
Temporary Bridge Installation
Drainage, Kerbing & Sub Base
Steel Bridge Beams
VRS barrier
Parapet Fencing
Waterproofing & Jointing
Reinforced Earth Installation
FRC
Road Markings
Traffic Management
Pond Lining
Scaffolding
Slipform Concrete Barriers
Material Testing



Procurement to Come

- Road Signs
- Street Lights
- Motorway Comms
- Acoustic Barrier
- Pavement & Footpath Surfacing
- CCTV [drainage]



Key A303 People & Contacts



Chris Hill

Project Director

Chris.Hill@gallifordtry.co.uk



Paul Read

Commercial Manager

Paul.Read@gallifordtry.co.uk



Adrian Paddock

Managing QS

Adrian.Paddock@gallifordtry.co.uk



Faye Hodgkinson

Supply Chain Lead

Faye.hodgkinson@gallifordtry.co.uk