

Future Workforce




Launched in 2012, the Supply Chain Sustainability School is an award-winning industry-wide collaboration of major companies to enable a sustainable built environment through knowledge and collaboration.

The School provides practical learning and support in the form of sustainability training, events and networking, e-learning modules, tailored assessment and a library of over 3,300 online resources.

Our mission is to
enable a sustainable
built environment
through knowledge
& collaboration.



A low-angle, upward-looking shot of a modern building's exterior. The central portion of the image is dominated by a dense, vibrant vertical garden, with various green plants and ferns growing in a structured grid. Several rectangular windows are integrated into the green wall. To the left and right of the central garden, the building's facade is visible, featuring large glass windows and balconies with dark metal railings. The sky is a pale, overcast blue.

Our vision is an industry
where everyone will have the
skills and knowledge to
deliver a sustainable future.

We connect industry and develop the training they need:



**Enabling
a more sustainable
built environment**

Sustainability is social, economic and environmental.



Partners come together in groups to drive school focuses and development of learning:



Sustainability



Digital



Fairness, Inclusion
& Respect



Lean



Management



Offsite



People



Procurement



Waste



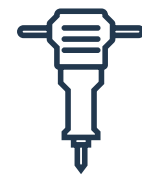
Wellbeing



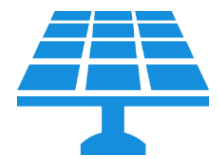
Climate
Change



Social Value



Plant



Retrofit



Construction



Infrastructure



Facilities
Management



Homes



Finishes
& Interiors



Wales



Scotland

How is it delivered?

- CPD workshops & training sessions
- E-learning
- Videos
- Best practice case studies
- Webpages
- Toolkits
- Animation
- Bespoke learning pathways
- Assessments and re-assessment



CPD-accredited webinars & workshops

Run by our team of experts and our Partners



5 Ways to Engage Men
in your Health and
Wellbeing Initiatives at
Work



Measuring & Managing
Sustainability
Performance Webinar



Digital Skills for
Construction &
Infrastructure (HS2
Supply Chain School) -
workshop



Supplier Relationship
Management -
workshop



Being a Good A
Workplace - we

Sustainability			Offsite	Management
Air Quality	Green Infrastructure	Social Value – Part 1	DfMA	Collaboration
BES 6001 for Responsible Sourcing	Heat Mapping (<i>prioritise your impacts</i>)	Social Value – Part 2	Offsite Manufacturing	Leading Change
Building Management in FM	Introduction to Biodiversity	Sourcing Sustainable Labour	Design: Product & Process	Innovation
Business Case for Sustainable Construction	Introduction to CEEQUAL	Sourcing Sustainable Plant	Logistics – Part 1	Project Management
Carbon in Infrastructure	Introduction to Materials	Sustainability in FM	Logistics – Part 2	Get it Right First Time
Carbon Reporting	Introduction to Waste	Sustainability and Groundworks	Onsite Assembly	Quality
Carbon Management for SMEs	Introduction to Water	Sustainability in Food & Drink	Best in Class Maintenance	Supply Chain Management
Circular Economy	Labour Practises in FM	Sustainability on Site	Offsite Systems	Marketing & Business Development
Circular Economy - Indicators	Life Cycle Analysis	Sustainable Construction	Offsite Sectors	Risk Management in Infrastructure
Climate Change & Carbon	Local and SME Spend in FM	Sustainable Construction in Wales	Offsite for Designers	Behavioural safety in Infrastructure
Reduce Carbon, Reduce Costs	Modern Slavery	Sustainable Drainage Systems	Offsite for Project Managers	Lean
Economy & Community	The Modern Slavery Act	Sustainable Homes	Offsite for Cost Consultants	Introduction to Lean
Energy & Carbon Efficient Buildings	Responding to the Modern Slavery Act	Sustainable Procurement	Offsite for Site Management	Collaborative Planning
Engaging a Diverse Supply Chain	Overheating in Homes	Sustainable Timber	Procurement	5s
Environmental Management	Performance Gap	Supply Chain Mapping & Modern Slavery	Procurement for SMEs	7 Wastes
Ethical Business (<i>competitive advantage through</i>)	Performance Measurement	Wellbeing for Future Generations Act, Wales	Cost & Value Based Procurement 1	Value Stream Mapping
Ethical Business – the basics	Plastic Waste		Cost & Value Based Procurement 2	Visual Management
Getting Value out of your EMS	Responsible Waste Mgmnt in FM		Managing Performance through Procurement	Lean: Train the Trainer
			Supplier Relationship Mgt	Digital
			Collaborative Procurement 1	Introduction to BIM
			Collaborative Procurement 2	Cyber Security
			Collaborative Procurement 3	Digital Strategy
				Digital Investment
				Digital through Project Lifecycle
Fairness, Inclusion & Respect				
Business case for FIR	Flexible working	Understanding Race & Culture 1		
FIR on Site: Why it matters	Invisible disabilities	Understanding Race & Culture 2		
Recruiting, fairly and inclusively	Leading People Inclusively	FIR: Train the Trainer		
Setting up an inclusive site	Managing Challenging Conversations			

Sustainability shorts:



Wellbeing - Sustainability Short

What is wellbeing and why is it important?



Business Ethics - Sustainability Short

Business ethics are central to how we run our organisations



Sustainability Strategy - Sustainability Short

How to develop your own and why.



Science Based Targets - Sustainability Short

You can't manage what you don't measure



Environmental Management in FM - Sustainability Short

A quick look at the key things to consider



Biodiversity - Sustainability Short

An introduction to the important issues involved with the ...



Air Quality - Sustainability Short

What factors can affect air quality, and how poor air ...



Water - Sustainability Short

Why water is a significant issue for the construction ...



Community Liaison - Managing Conflict - Sustainability Short

Daily issues faced when dealing with the wider ...



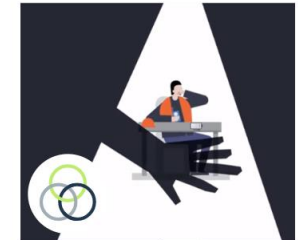
Waste in FM - Sustainability Short

Discusses the issue of waste in the FM sector.



Sustainability At Work - Sustainability Short

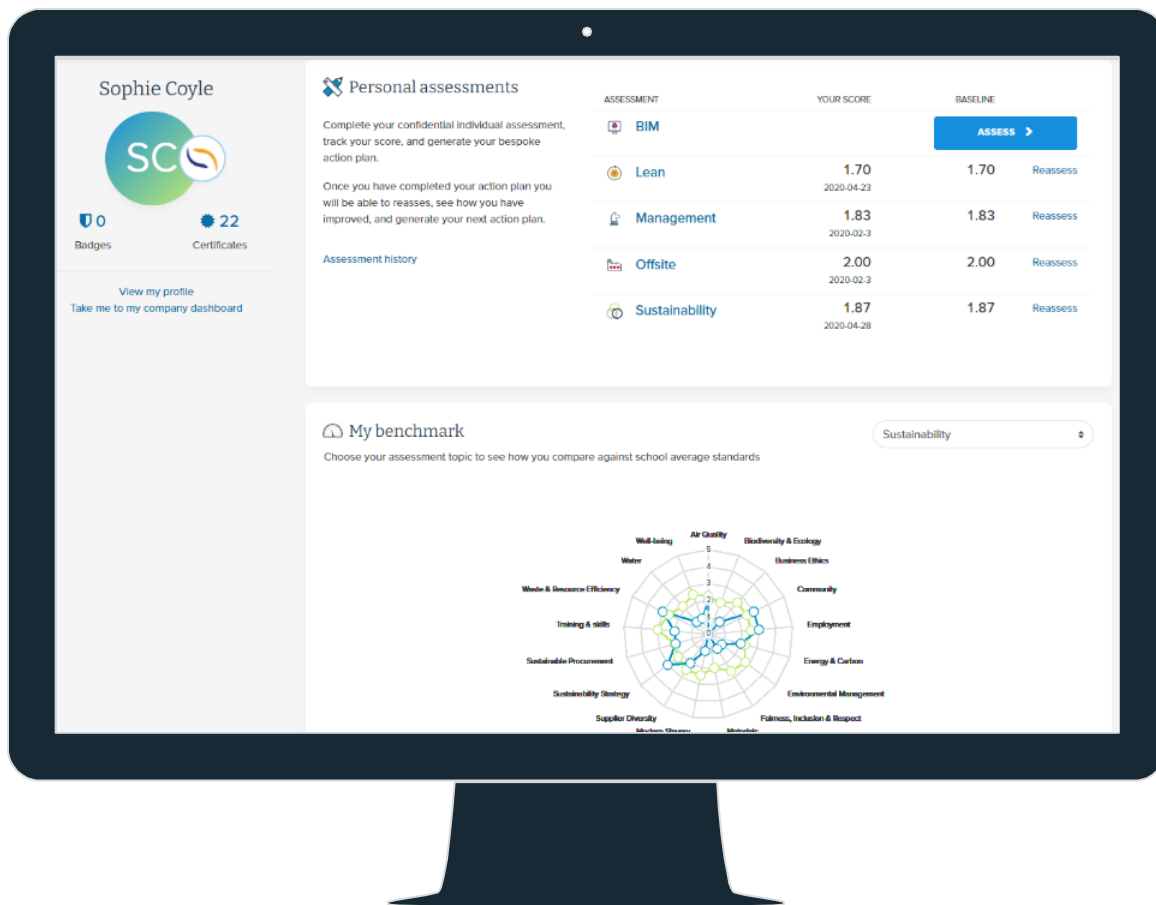
An introduction to sustainability for office and support ...



Modern Slavery - Sustainability Short

Modern Slavery - Can you spot the signs?

Portable dashboards to take your learning with you



Action Sustainability



[View company profile](#)
Take me to my personal dashboard

Level



[Download your badge](#)

Your status will expire with no action on: 2023-09-15

Progress



100% on your way to gold

To maintain Gold, you need to:

- Complete a re-assessment within 12 months
- Complete 10 resources in past 6 months

Administration

[Q](#)

[Site administration](#)
[Issue certificate](#)
[Upload FIR Survey](#)
[FIR Report](#)
[Manage learning pathways](#)

Reporting

[Members](#)
[Users](#)
[Resources](#)
[Resources Accessed \(Internal\)](#)
[Priority Supplier Resources Accessed](#)
[Company scores](#)
[User scores](#)
[Priority suppliers](#)
[Supplying to](#)

Charts

[Individuals](#)
[Companies](#)
[Partners](#)
[Priority suppliers](#)
[Priority suppliers summary](#)
[Supplying to](#)

Our people

Wendy Carwardine
Owner
wendy@actionsustainability.com

[View all colleagues](#)

Priority suppliers

[Priority suppliers](#)
[Business units](#)
[Assessment badges](#)

Company assessments

Complete your confidential company assessment, track your score, and generate your bespoke learning plan.

Assessment topic

Digital

Last assessed : 2022-11-7

Your Score

2.57

Current

3.38

Baseline

[ASSESS NOW](#)

Industry benchmark

M&E

See how your score compares to others in your industry, and across the School.



KEY: ● YOUR SCORE ● SCHOOL AVERAGE ● SECTOR AVERAGE

[SHOW DATA](#)

Company learning plan

View your learning plan of resources based on your most recent assessment results.

[LEARNING PLAN](#)

Our activity

3660 hrs 1576 hrs
21 mins 17 mins
Total time CPD time

Our events

Attended 342
Registered 622

Our Learning Pathways

Click here to see activities assigned to you by our Partners.

The difference we make

In 2012, we were founded by 7 industry leaders in the built environment in order to upskill their workforce and supply chains.

We now have nearly **200 industry partners**.

These Partners sit on **18 collaborative leadership groups**.

We have **88,000 users registered** with the School.

Our members report that the school has helped them:

- Reduce cost
- Reduce waste
- Reduce carbon emissions
- Have a better understanding of sustainability



Future Workforce is a new market for the school



Sustainability



Digital



Fairness, Inclusion
& Respect



Lean



Management



Offsite



People



Procurement



Waste



Wellbeing



Climate
Change



Social Value



Plant



Retrofit



Construction



Infrastructure



Facilities
Management



Homes



Finishes
& Interiors



Wales



Scotland



Future
Workforce

We want to help education providers deliver green skills in a green environment.



We can help address:

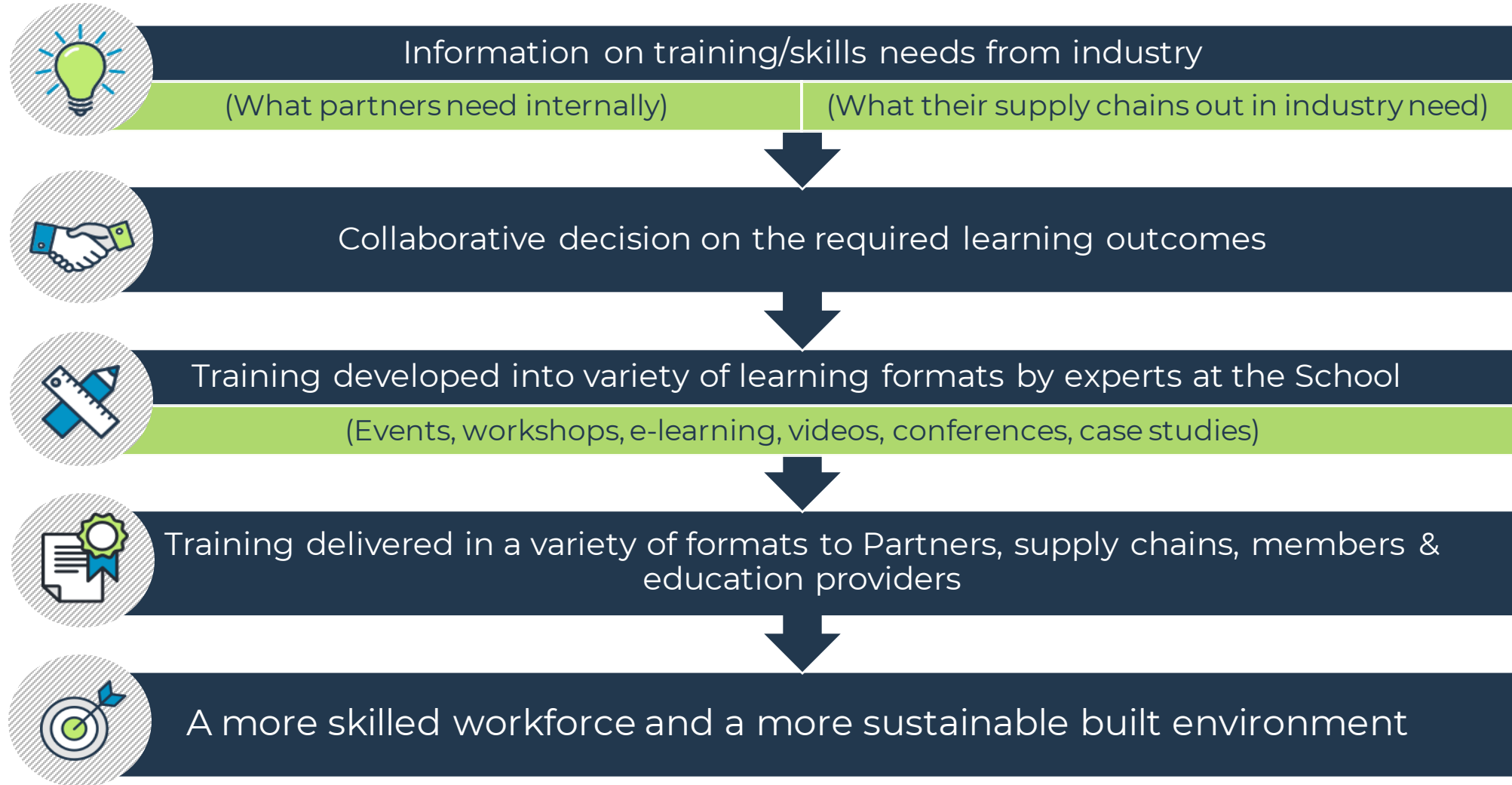
- The fast pace of change in sustainability and skills
- The need for streamlined industry collaboration
- The vast amount of different content needed for changing curriculums
- The need to attract and retain skilled staff to deliver it
- The insights, networks and evidence of employers required for development and income
- The enhancing requirements around running a sustainable site



The skills needed for the green economy are moving fast. We're already at the forefront.



A proven model of industry led education



We can provide your learners with industry training & insight into working life

- A CPD dashboard they can take into work: that is recognised by the biggest organisations in the built environment sector.
- Training on the most up-to-date issues in the industry
- Learning that supports and goes wider than the curriculum
- Insight into the world of work and employability
- Wider learning: Carbon Literacy, Management and EDI



FIR Toolbox Talk: Respect

Behaviour on site that treats everyone with respect



FIR Toolbox Talk: Responsibilities

What responsibility employers have to employees, and vice ...



FIR Toolbox Talk: Language

This Toolbox Talk discusses language that is and is not ...

We can provide your staff with industry CPD accreditation and opportunities to grow

Teaching staff:

- Can assess their knowledge against those working in the industry and follow learning plans to improve
- Can access industry training on key areas of development
- Can increase their confidence in delivering around sustainability

Business Services staff :

- Can access industry approved CPD to improve capability



We will bring Future Workforce into our industry Leadership Groups:



Climate Action



Construction



Digital



Fairness, Inclusion
& Respect



FM



Homes



Infrastructure



Labour /
People



Lean



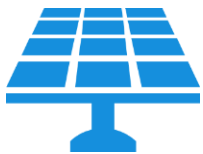
Offsite



Plant



Procurement



Retrofit



Social Value



Waste



Wellbeing



Wales



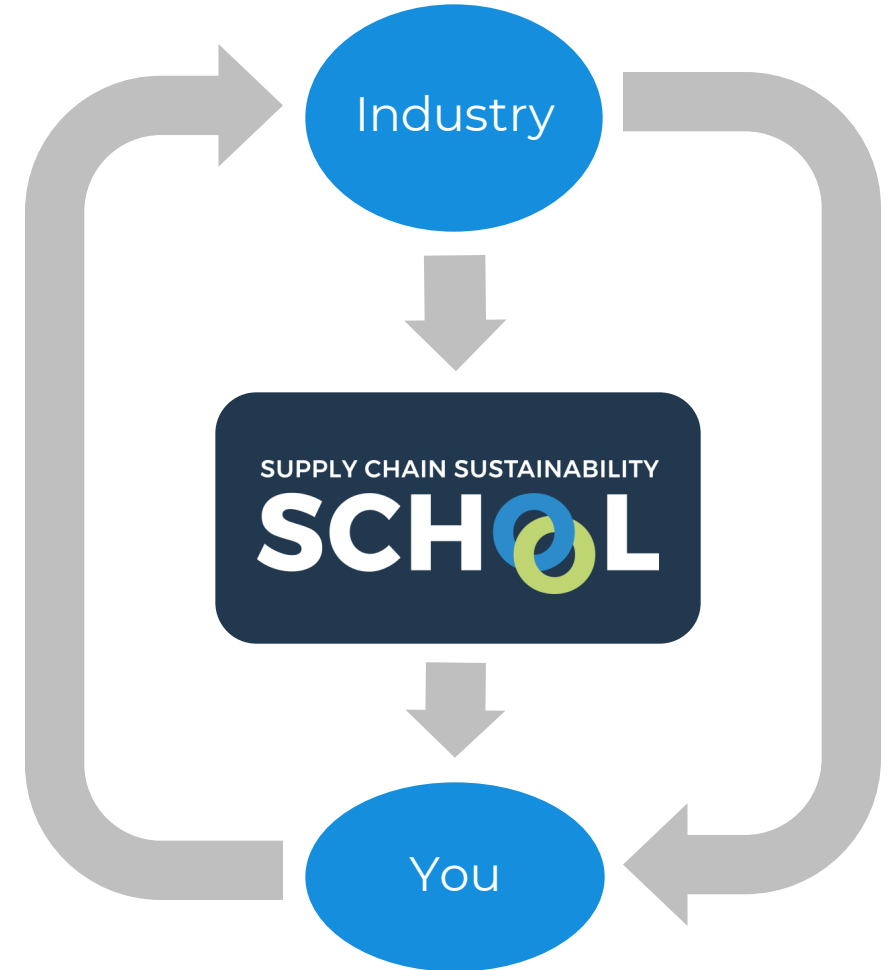
Scotland

We facilitate the connections that enable opportunities where you are



We have the insight for curriculum development

- Future-proof delivery with **employer-led curriculums**
- **Evidence** of industry engagement, endorsement and approval of courses
- **Funding opportunities** with demonstrable employer need and benefits to business
- **Inspection** and framework compliance





We can help you run a more efficient & sustainable business & estate:

- Estates
- Capital Projects
- Procurement
- Finance
- HR
- Learning & Development
- Business Development
- Marketing
- Leadership

Our offer will:

- ✓ Enable your learners to access **industry-developed learning** that they can take into work
- ✓ Upskill your staff with accredited **CPD**: in construction, and across the whole organisation
- ✓ Facilitate **connections** into industry
- ✓ Provide insights and evidence from employers for **future planning**
- ✓ Help to increase the **productivity** and **sustainability** of the institution itself



Cost:

Turnover <50M:

£7,250 p/a

Turnover >50M:

£13,300 p/a



- Unlimited staff CPD
- Unlimited student learning
- Dashboards & Management system
- 3-5 live CPD Workshops delivered by experts
- Facilitated connection into industry through our partners
- Access to Leadership Groups including new Future Workforce group.
- Dedicated account manager

Please discuss cost with us.



Contact me:

Holly Hansen-Maughan

holly@supplychainschool.co.uk

07884 191 719