

Introducing our Environmental Sustainability Strategy



<https://nationalhighways.co.uk/ESS>

A connected country
A thriving environment



Our road network



20,000

bridges and other structures



150,000

signs



100,000

sensors, including traffic sensors



30,000

hectares of green (soft) estate



1,000

Drainage ponds

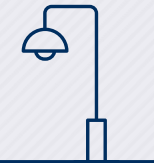
10,000

miles of carriageways



100,000

street lights



3,500

electronic messaging signs



4,500

miles of motorway and major A-road



Our roads can be,
and will be,
a force for good



“

Our environmental performance is of national significance, and we are setting out ambitious but credible plans to achieve **net zero carbon**, be positive for **nature** and reduce our environmental impacts on **communities**

”

**Stephen Elderkin, Director,
Environmental Sustainability**

Our Environmental Sustainability Strategy vision

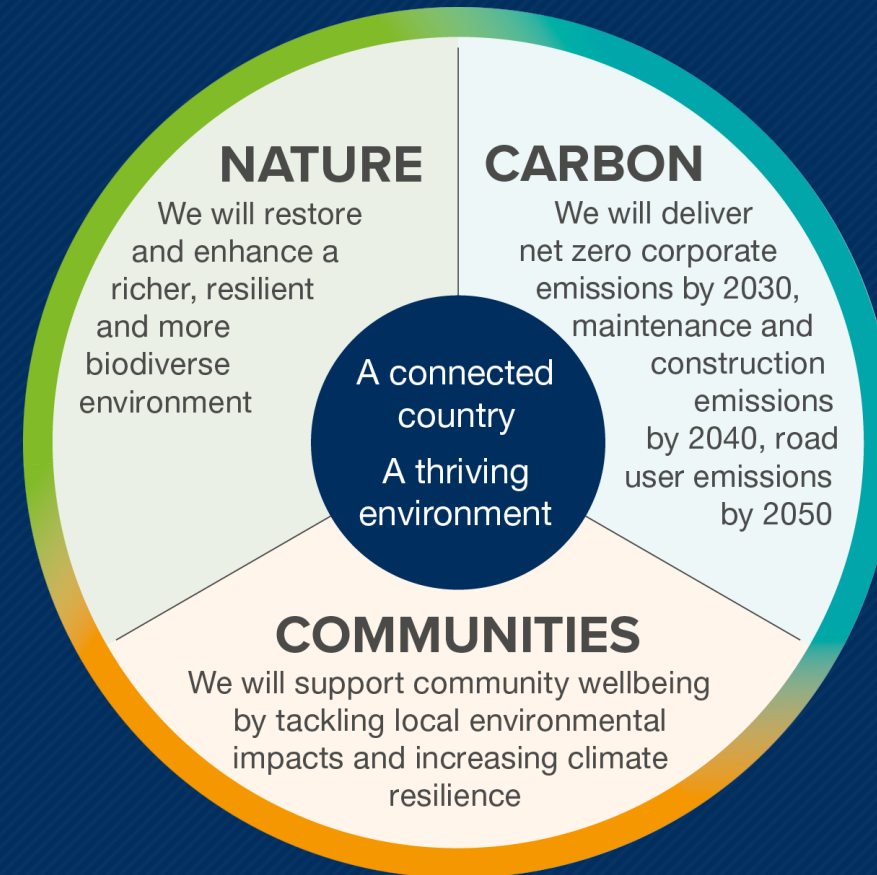
A connected country
A thriving environment

At the centre of our strategy
is our vision: to fulfil our core
purpose of connecting the
country, in a way that supports
a thriving environment for
generations to come

Our strategic outcomes

To realise our vision, we need to deliver ambitious, positive change for nature, carbon and communities

We describe what we are working towards for each of these strategic outcomes

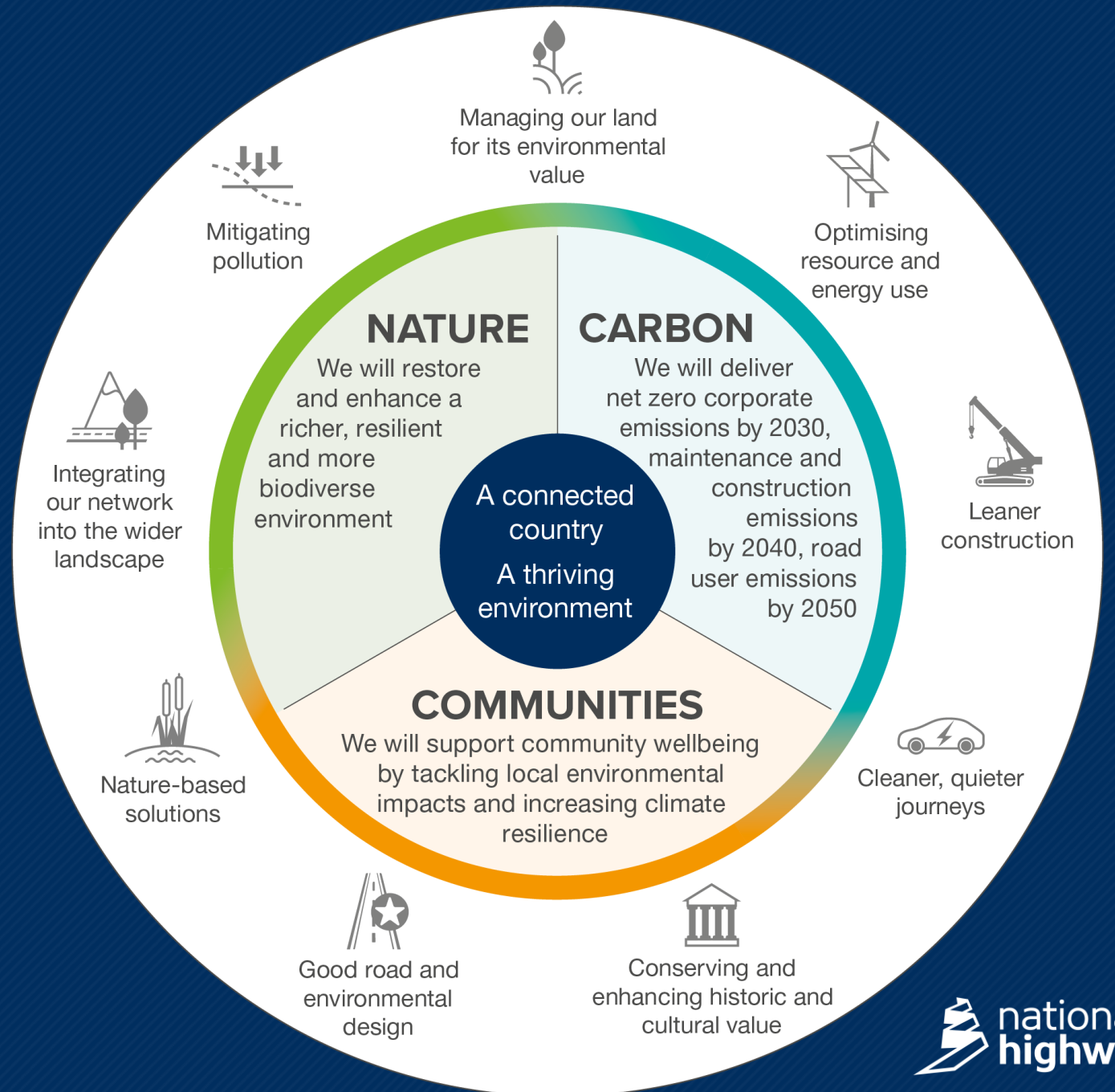


Our nine priority areas

We've identified nine key areas where we can focus our efforts to maximise benefits across the three strategic outcomes of nature, carbon and communities

Each priority area can holistically contribute to one or more of the strategic outcomes

The priority areas set out the actions we are taking to deliver our strategy for environmental sustainability



Where are we now?



In some parts of our 4,500 mile network:

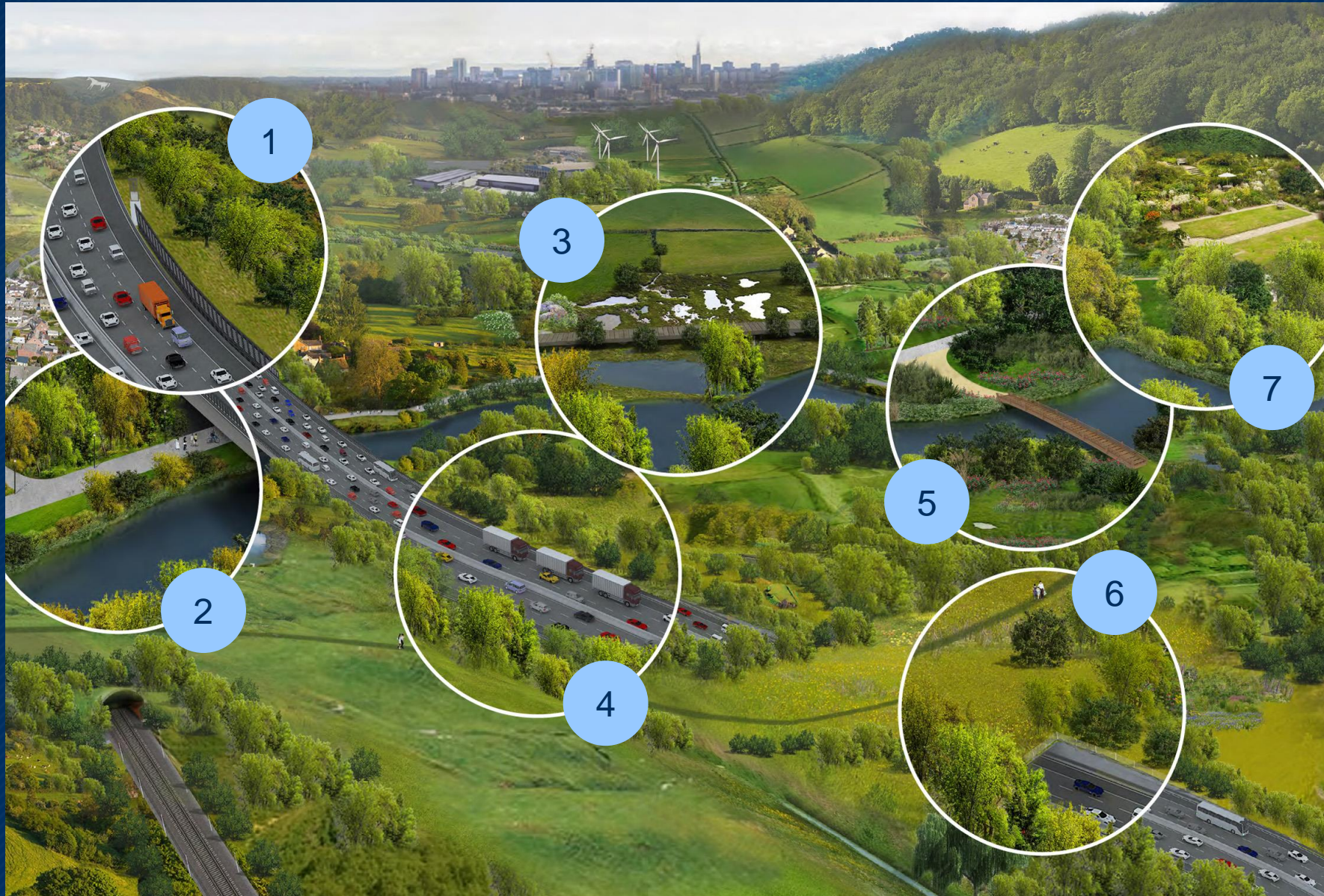
- Severance issues
- Fragmented habitats
- Altered waterways

Over four million road users per day:

- Contributing to carbon emissions
- Generating noise, air and water pollution

Some key actions have been taken to address these

Where do we want to be?



Changes we could see across our network by 2050:

1. Improving health and wellbeing.
2. Promoting active travel.
3. Using natural flood management.
4. Good road design.
5. Promoting sustainable resource use.
6. Increasing connectivity.
7. Enhancing cultural heritage.

What this means for nature



Our ambition:

“We will protect, restore and enhance a richer, resilient and more biodiverse environment”.



Understanding the environmental value of our land and **prioritising habitats.**

Managing our estate as **an environmental asset** and building it into mainstream project and management decision-making.

Better integrating our network into the wider natural and historic landscape.



Managing trees and vegetation to support **climate resilient landscapes** and vibrant, **species-rich** habitats.



Promoting a clean, healthy and tranquil natural environment by **reducing pollution** across our estate.



Employing **nature-based solutions** to enhance the habitats and wildlife of our land as part of the wider ecosystem.

What this means for carbon



Our ambition:

“We will deliver net zero corporate emissions by 2030, maintenance and construction emissions by 2040 and road user emissions by 2050”.



Working with partners to accelerate **vehicle decarbonisation**.

Promoting **leaner construction** to minimise our carbon footprint and the impact of road-building and maintenance.



Taking a **holistic approach**, delivering multiple benefits, avoiding conflict between competing demands to maximise carbon benefits, support communities, and enhance nature.



Investing in **renewable energy** to reduce our own emissions.

Optimising resource use and taking a **whole life cycle approach** to design.



What this means for communities



Our ambition:

“We will support community wellbeing by tackling local environmental impacts and increasing climate resilience”.



Minimising particulate air, water and noise pollution.



Applying **good road and environmental design.**



Employing nature-based solutions to **improve climate resilience** and protect quality of life and wellbeing.



Being a **responsible custodian** of heritage features on and close to the network.

Partnering with our supply chain



We need our
supply chain's
support



Changing the
way we work



Growing
environmental
capabilities

A30 Keyn Glas

ESS Case Study

The challenge

The A30 forms a spine through the Cornish peninsula, resulting in habitat and landscape severance. We identified an opportunity to go above and beyond standard environmental mitigations and create a programme of initiatives to deliver improved quality and connectivity of landscape and habitats, together with local and national partners.

What we did

- Worked with a large group of partners and stakeholders to support delivery of 'Keyn Glas' projects.
- Historic field patterns and traditional Cornish hedgerows were restored. We planted trees and woodland, created species rich grasslands and meadows, and restored ponds and wetlands.
- Pilot projects have been delivered using nature-based solutions for flooding and water quality problems.
- Saints Trails cycle network in development, 13km of dedicated on and off-road trails for cyclists, pedestrians, and horse riders.

Benefits

- ✓ 32 habitat areas connected
- ✓ 13,000 trees planted, four pond habitats created or improved, along with five traditional orchards.
- ✓ Up to 2020, Green Ribs delivered 97% biodiversity net gain.
- ✓ Tree planting will result in 10 tonnes of CO2 being absorbed annually and improved air quality.
- ✓ Natural flood management measures have improved soil and water quality.



Farmland south of the A30 (Cornwall)



Nature



Carbon



Communities



Conserving and enhancing historic and cultural value



Integrating our network into the wider landscape



Nature-based solutions



Mitigating pollution



Managing our land for its environmental value

Our implementation roadmap

